



NEWS

The Newsletter of the
Edward Alderton Theatre

DECEMBER 2023



KEEPING
IN TOUCH -
THE EAT ONLINE
NEWSLETTER

Full details of our 2023/2024 Season can be found on page 6



DON'T MISS THIS CLASSIC!

***It's A Wonderful Life* - 9th-16th Dec - Book your tickets now**

A warm welcome to our latest EAT newsletter to all our members. As December is here, it's time to reflect and congratulate all involved in our recent productions: *The Ladykillers*, and *Brighton Beat*, both directed by Keith Neville, brought comedy and drama, musical highlights and new faces to the EAT respectively. Both productions were enjoyed by our supportive audiences. Now it's on to our seasonal production, *It's a Wonderful Life* - a live radio play directed by Lindsay Dale. Please see page 3 for more details. Most people are familiar with the heart-warming story of George Bailey, and this production promises to deliver that classic tale right here at the EAT. This is not one to miss, so please book your tickets, bring friends and family, and enjoy!

In October, we held a very successful training session on all matters front-of-house, so huge thanks to all members who attended or helped on the day.

Don't forget it's the EAT's much-loved traditional 'Christmas Carols evening' with mulled wine and mince pies on Wednesday the 20th December at 8pm. Hope to see many of you there.

From me and the EAT Management Committee, we wish you all season's greetings, and here's to a happy, healthy, and productive 2024!

Carrie Breed, Chair - EAT Management Committee



Dear Members and Patrons,
come and join us at the EAT on
Wednesday 20th December
for an evening of song, mulled
wine and mince pies.
The fun begins at 8pm!

IN THIS EDITION...

- 2: YOUR THEATRE NEEDS YOU
Volunteers needed at the EAT...
- 3: Details of our next EAT show -
It's A Wonderful Life
- 4: Meet The Production Cast
- 5: Images from our previous
EAT production - *Brighton Beat*
- 6: Details of the 2023/2024
Season of Shows
- 7: The EAT Notice Board



**Keep up-to-date
with EAT News
on our facebook
page: EAT.BXH**

www.edwardalderton.org

YOUR THEATRE NEEDS YOU!

Volunteers are urgently needed for a variety of roles at The EAT

It takes a great deal of time and love from everyone that volunteers their help with the running and upkeep of our wonderful little theatre. In order to keep the EAT ticking along as smoothly as possible, we need to ask our members if they can spare some time to assist with the following areas:

SET BUILDING AND PAINTING TECH - STAGE LIGHTING AND SOUND PROPS AND COSTUMES ONLINE ASSISTANCE WITH TICKET BOOKING

Do you or someone you know have some spare time? Would you like to join our team and assist us with the essential tasks that ensure our theatre stays open?

If you would like to learn more about each of these areas please contact one of the people below. They will be more than happy to chat about what is involved and how rewarding these tasks can be. Alternatively, why not pop along to the theatre on one of our Wednesday evening social nights for a drink and a chat. The bar is open from 8 till 11pm, every Wednesday evening apart from during the week of a production.

EAT CONTACTS

Stage lighting, sound and online ticket booking: **Michael Taylor** mj.arlington@btinternet.com

Set building and painting: **Kevin Onley** konley@btinternet.com

URGENTLY NEEDED-

SET BUILD LEAD

‘A CHANGE OF SCENERY REQUIRED!’

The multi-talented Kevin Onley, who has graced the EAT with his skills in so many ways, is stepping down from his role as Set Build Lead.

We would love a volunteer to take on this very important role at the theatre and, to assist with this, Kevin has kindly provided a few notes on the Set Build Lead responsibilities:

- The role requires someone able to visualise and adapt set designs to fit within the EAT stage area, accounting for audience sight lines, actor entrance and exits and fire escape requirements.
- Good understanding of ladder safety, working with power tools and general basic DIY skills.
- An ability to coordinate projects to fixed deadlines and delegate construction work according to team skills and availability.
- Attend and organise set construction days / evenings and set break dismantling sessions and coordinate storage of reusable flats and consumables.
- Arrange and/or delegate disposal of unwanted materials.
- Meet with directors to discuss, plan and advise on forthcoming set design requirements budget restraints.
- Oversee purchase and delivery of timber and consumables.

If this is of interest to you, please contact Kevin at:

konley@btinternet.com





OUR NEXT PRODUCTION

**A LIVE RADIO PLAY
FULL LENGTH VERSION**

BOOK YOUR TICKETS NOW

Based on the story,
The Greatest Gift, by Philip
Van Doren Stern, adapted
by Joe Landry

9th - 16th December 2023

IT'S A WONDERFUL LIFE

DIRECTED BY LINDSAY DALE

Billed as the holiday classic to define all holiday classics, and set in 1946 up-state New York. This is the story of George, a frustrated businessman who feels trapped in his home town. He becomes suicidal and Clarence - a trainee angel, is sent from heaven to try and change his mind. Clarence shows George what life in the town would have been like without his existence. It is a truly heart-warming tale about the power of good. This is presented as the recording of a radio play, so the actors will be playing radio actors gathered in the recording studio, complete with live audience (our audience), to record *It's A Wonderful Life* for broadcast

THE CAST:

ANDREW NEWBON George Bailey
PENNY WALSH Mary Bailey
SALLIE CROSS Josephine
DAVID TURNER Clarence
ANGELA BRIGNELL Violet and others

ERIC WHITING Potter and others
JOSH CLARKSON Uncle Billy and others
DAVID GEORGE Harry and others
CARRIE BREED Stage Manager & Foley Artist
PETER BREED Foley Artist

www.edwardalderton.org

It's A Wonderful Life

MEET THE CAST



Andrew Newbon
George Bailey



Penny Walshe
Mary Bailey



Sallie Cross
Josephine



David Turner
Clarence



Angela Brignell
Violet and others



Eric Whiting
Potter and others



Josh Clarkson
Uncle Billy & others



David George
Harry & others



Carrie Breed
SM & Foley Artist



Peter Breed
Foley Artist



Lindsay Dale
Director

Photos
© Robert
Piwko

ANDREW NEWBON - George Bailey

I have been involved in amateur theatre in the local and surrounding areas for the past 20 years. As a firm fan of the movie, I am very excited to bring the dreams and sacrifices of George Bailey to the audiences of Bexleyheath. I hope you enjoy the show and wish you all a very Merry Christmas. Hot Dog!

PENNY WALSHE - Mary Bailey

This is my first appearance at the EAT, although I've performed locally in musicals and plays for years. Most recently, I played OTT Spirit of Christmas Present at the GWT in *A Christmas Carol* and last year took on the crazy Sara Jane Moore in Sondheim's *Assassins* for Erith Playhouse. So, playing American sweetheart and perfect wife Mary Hatch Bailey in this iconic Christmas story is a welcome change. I'll be back at EAT in February to perform in *The Revlon Girl*.

SALLIE CROSS - Josephine

This is my third production at the Edward Alderton having previously appeared in *Comfort and Joy* and *Lord Arthur Saville's Crime*. This may be my one and only chance to play an Angel and in such an iconic and classic story, and so it is a privilege to bring Josephine to 'life' for our audiences

DAVID TURNER - Clarence

Clarence the angel is a dream role for me. I have loved the movie all my life. This is my second Christmas show at EAT. I was also in *Comfort and Joy*. I perform at many different theatres and my next role is as the Baron's

henchman in the Whitstable Playhouse pantomime, *Mother Goose*.

ANGELA BRIGNELL - Violet and others

I have been fortunate over so many years to play so many parts, largely at The Bob Hope Theatre, Eltham, Bromley Little and at Geoffrey Whitworth, Crayford. SO guess how thrilled I am, for the first time ever, to be playing so many parts, eight in all, all in ONE Wonderful play at The Edward Alderton Theatre!

ERIC WHITING - Potter and others

I'm not sure about playing a money-grabbing old misery in this show – I prefer Scrooge. Fun fact: Despite being a Yuletide favourite, the word 'Christmas' is never spoken in *It's A Wonderful Life*.

JOSH CLARKSON - Uncle Billy and others

This will be my first production at the Edward Alderton Theatre and my first live performance after finishing my training at the Miskin Theatre. I've played some very unique roles in the past but this is an exciting new turn for me and I very much look forward to showing what I can do.

DAVID GEORGE - Harry and others

Hi I'm David, it's so wonderful to be back for a festive show. I have loved working with such a very talented cast and crew. Thank you to everyone for supporting *It's A Wonderful Life*, its going to be amazing. Wishing you all a very Merry Christmas and a Happy New Year. EAT credits include: Dr. Jekyll in *Jekyll and Hyde*, Harry in *The Ladykillers* and Bruce in *Love From A Stranger*.

CARRIE BREED - Stage Manager & Foley Artist

I'm really proud to be in another production at the EAT, this time as the on-stage, Stage Manager and a Foley Artist. I've been a member of the EAT since 2018 and have enjoyed acting and performing in various plays including: *Dad's Army*, *Comfort and Joy*, *Lord Arthur Saville's Crime*, *Chekhov Shorts*, *The Ladykillers* and *Brighton Beat*. I was also the joint Stage Manager for *Wait until Dark*. As you'll see, it's been super fun for me learning new 'skills' for this one! I hope you enjoy this feel-good production of, *It's A Wonderful Life*.

PETER BREED - Foley Artist

You will rarely find me on stage at the EAT, as I am mostly involved backstage, having been in the tech box for several recent shows. This production gives me the exciting opportunity to take the sound onstage as a Foley artist. I have recently been in *Immersive Experiences* by the Shooters Hill Players, as well as previously participating in Kent Coast Theatre productions in Faversham and Whitstable.

LINDSAY DALE - Director

Most of my theatre work to date has been as stage manager and in lighting and sound design. I am delighted to have been invited by EAT to direct this moving and festive play.

It has been a pleasure and a privilege to watch the small but perfect cast bring so many characters to life.



IMAGES FROM OUR PREVIOUS PRODUCTION:

BRIGHTON BEAT

11th -12th November, 2023 - A Two-Night Special

Photos kindly provided by Carrie Breed, Dave George, Mike Lewis and Graham Youngs

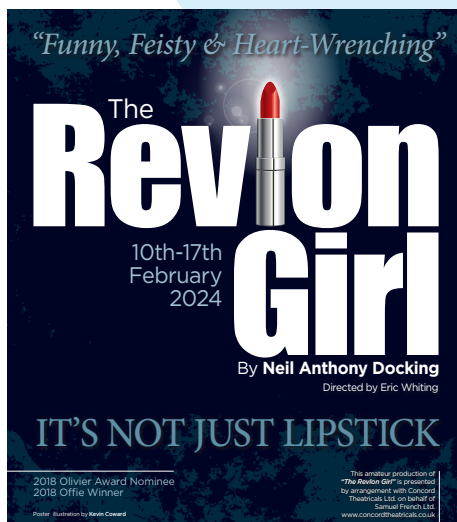


THE EDWARD ALDERTON THEATRE PROUDLY PRESENTS:

THE EAT 2023-2024 SEASON OF SHOWS



It's A Wonderful Life
(Classic fantasy)
9th-16th December, 2023



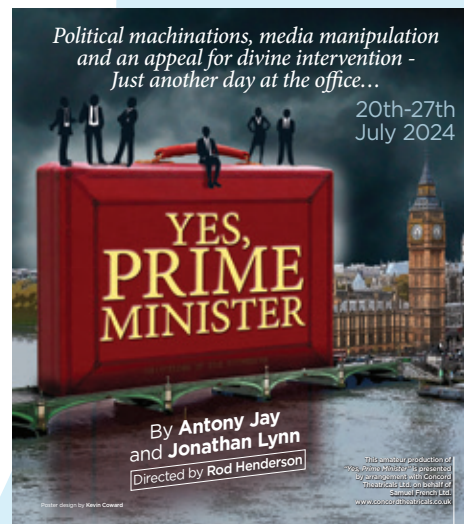
The Revlon Girl
(Drama)
10th-17th February, 2024



A Taste of Honey
(Drama)
30th March - 6th April, 2024



The Children
(Environmental thriller)
25th May - 1st June, 2024



Yes, Prime Minister
(Comedy)
20th-27th July, 2024

TICKETS AVAILABLE NOW AT:

www.edwardalderton.org

THE EAT NOTICE BOARD

COVID SAFETY AT THE EAT:

The safety and security of everyone that visits our theatre is always a priority of the Management Committee and Drama Committee. In the on-going Covid situation, Hand Sanitizer will be available upon entering the theatre, face coverings are optional. Full cleaning of all work surfaces and the theatre interiors are being carried out on a regular basis.

COME OVER TO THE LIGHT SIDE...



The EAT is looking for volunteers to operate Lights and Sound for our ongoing shows. It's not a problem if you have never done this before as you will receive full training and support from Mick Taylor, our resident Technical Director.

Do you know anyone over 16 who would like to get involved and would like to train on the technical aspects of theatre production?

Please contact Mick Taylor direct on mj.arlington@btinternet.com for more details.

MANAGEMENT COMMITTEE:

Chair: Carrie Breed
Vice Chair: Paul Grimshaw
Secretary: Karen Friett
Treasurer: Maureen Hardwen
Technical Director: Michael Taylor
Bar Manager: Kevin Onley
Publicity Director: Kevin Coward
Theatre Maintenance: Peter Breed
Theatre Liaison Officer: Denis Darvill

DRAMA COMMITTEE:

Chair: Keith Neville
Members: Rachel De Silva, Rod Henderson, Melinda Hunt and Geraldine Ling

OTHER THEATRE SENIOR ROLES:

Membership Secretary: Chris Manning-Perry
Set Building Lead: Kevin Onley

THE EDWARD ALDERTON THEATRE,
5 BRAMPTON ROAD,
BEXLEYHEATH,
KENT,
DA7 4EZ



follow us on facebook
[EAT.BXH](https://www.facebook.com/EAT.BXH)



ROBERT PIWKO PHOTOGRAPHY
WWW.ROBERTPIWKO.CO.UK
07966 014 084



Book online at
www.ticketsource.co.uk/edwardalderton
(no booking fees apply)
or telephone* our booking agent TicketSource
on **0333 666 3366**

*Telephone bookings will incur a £1.50 service fee
which includes ticket delivery.